

# Clear Creek Realty



## 4.195 Treed and Private Acreage Adjacent to Forest Service

Offered at ~~\$178,000~~. now \$155,900

Residential ♦ Land ♦ Ranch ♦ Recreational



♦ 4.195 acres, only a short distance from Georgetown Lake & adjacent to County Road.

♦ The many trees & Forest Service boundary provides great privacy.

♦ Association fees have only been \$50 per year for the last few years with Jericho Bay IV.

♦ Close to the Georgetown Lake,

an area known for water sports, winter sports including snowmobiling.

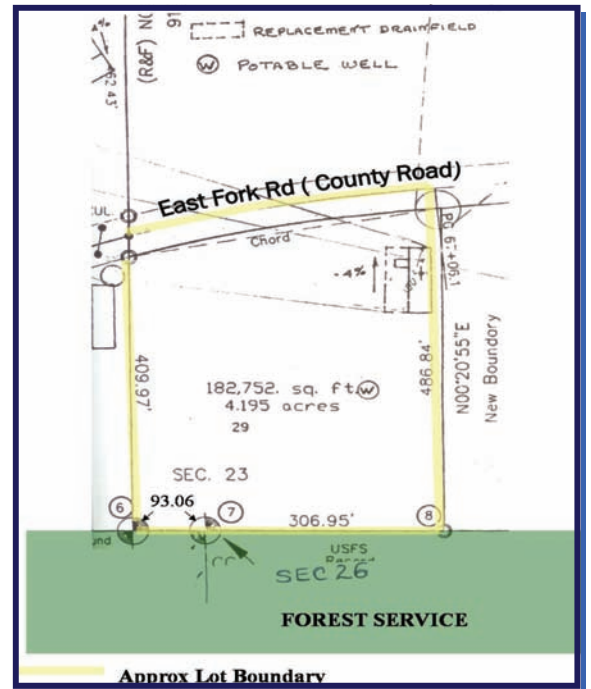
♦ Reasonable Covenants & available online at [www.clearcreekmontana.com](http://www.clearcreekmontana.com).

♦ 2007 Prop. Tax - \$769.63

Seller, Karen Talley, is a licensed real estate broker in Montana.

Contact: Karen Talley  
of Clear Creek Realty  
Office ♦ (406) 842-5028  
Cell ♦ (406) 596-0123

[www.clearcreekmontana.com](http://www.clearcreekmontana.com)  
[karen@clearcreekmt.com](mailto:karen@clearcreekmt.com)



# For Sale