



SCALE



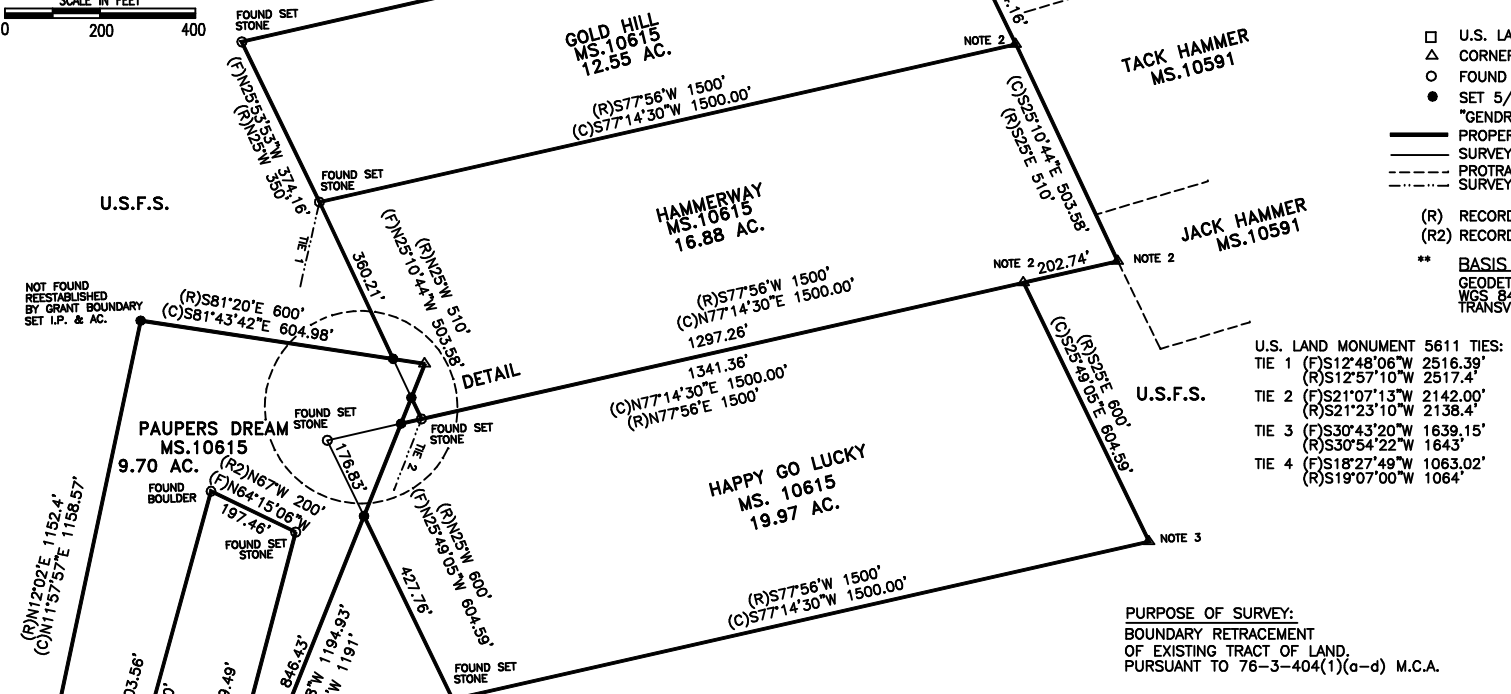
NOTE 1: RECORD CORNER AND W.C. CORNER LAND ON CLIFF FACE UNABLE TO FIND OR SET.
 NOTE 2: RECORD CORNERS LAND ON STEEP SIDE SLOPE IN AVALANCH CHUTE UNABLE TO SET.
 NOTE 3: RECORD CORNER LANDS IN BOULDER SLIDE UNABLE TO FIND OR SET.
 NOTE 4: RECORD CORNER LANDS ON STEEP SIDE SLOPE IN AVALANCH CHUTE UNABLE TO SET.

CERTIFICATE OF SURVEY

SECTION 8, T.3S., R.4W., P.M.,M
 MINERAL SURVEY 10615
 MADISON COUNTY, MONTANA

LEGEND

- U.S. LAND MARK 5611
- △ CORNER NOT FOUND
- FOUND MINERAL SURVEY CORNER AS NOTED
- SET 5/8" x 24" REBAR WITH 2" ALUM "GENDREAU 13235LS & CORNER INFO"
- PROPERTY BOUNDARY THIS SURVEY
- SURVEYED LINES
- - - PROTRACTED SURVEY LINES UNSURVEYED
- · · SURVEY TIE LINE TO U.S.L.M. 5611
- (R) RECORD MINERAL SURVEY 10615
- (R2) RECORD MINERAL SURVEY 6629
- ** BASIS OF BEARING
 GEODETIC NORTH
 WGS 84 ROTATION AND
 TRANSVERSE MERCATOR PROJECTION



- U.S. LAND MONUMENT 5611 TIES:
- TIE 1 (F)S12°48'06"W 2516.39'
(R)S12°57'10"W 2517.4'
 - TIE 2 (F)S21°07'13"W 2142.00'
(R)S21°23'10"W 2138.4'
 - TIE 3 (F)S30°43'20"W 1639.15'
(R)S30°54'22"W 1643'
 - TIE 4 (F)S18°27'49"W 1063.02'
(R)S19°07'00"W 1064'

PURPOSE OF SURVEY:
 BOUNDARY RETRACEMENT
 OF EXISTING TRACT OF LAND,
 PURSUANT TO 76-3-404(1)(c-d) M.C.A.

LEGAL DESCRIPTION M.S. 10615 PAUPERS DREAM

A TRACT OF LAND LOCATED IN SECTION 8, T.3S., R.4W., MADISON COUNTY, MONTANA, DESCRIBED AS FOLLOWS:
 COMMENCING AT CORNER 1 OF OF M.S. 10615 PAUPERS DREAM, FROM WHICH THE U.S. LAND MONUMENT 5611 BEARS S.18°27'49"W., 1063.02 FT.; THENCE N.80°55'45"W., 26.39 FT.; THENCE N.14°45'04"E., 773.48 FT. TO CORNER 2 OF M.S. 6629; THENCE N.84°15'08"W., 197.46 FT. TO CORNER 3 M.S. 6629; THENCE S.15°19'33"W., 831.30 FT.; THENCE N.80°55'45"W., 170.43 FT. TO CORNER 2 M.S. 10615 PAUPERS DREAM; THENCE N.11°57'57"E., 1158.57 FT. TO CORNER 3 M.S. 10615 PAUPERS DREAM; THENCE S.81°43'42"E., 604.98 FT. TO CORNER 4 M.S.10615 PAUPERS DREAM; THENCE S.21°48'28"W., 1194.93 FT. TO THE POINT OF BEGINNING CONTAINING 9.70 ACRES OF LAND.

LEGAL DESCRIPTION M.S. 10615 HAPPY GO LUCKY

A TRACT OF LAND LOCATED IN SECTION 8, T.3S., R.4W., MADISON COUNTY, MONTANA, DESCRIBED AS FOLLOWS:
 COMMENCING AT CORNER 1 OF OF M.S. 10615 HAPPY GO LUCKY, FROM WHICH THE U.S. LAND MONUMENT 5611 BEARS S.30°43'20"W., 1639.15 FT.; THENCE N.25°49'05"W., 427.76 FT.; THENCE N.21°48'28"E., 209.18 FT.; THENCE N.77°14'30"E., 1341.36 FT. TO CORNER 2 M.S. 10615 HAPPY GO LUCKY; THENCE S.25°49'05"E., 604.59 FT. TO CORNER 3 M.S. 10615 HAPPY GO LUCKY; THENCE S.77°14'30"W., 1500.00 FT. TO THE POINT OF BEGINNING CONTAINING 19.97 ACRES OF LAND.

LEGAL DESCRIPTION M.S. 10615 HAMMERWAY

A TRACT OF LAND LOCATED IN SECTION 8, T.3S., R.4W., MADISON COUNTY, MONTANA, DESCRIBED AS FOLLOWS:
 COMMENCING AT CORNER 1 OF OF M.S. 10615 HAMMERWAY, FROM WHICH THE U.S. LAND MONUMENT 5611 BEARS S.21°07'13"W., 2142.00 FT.; THENCE N.25°10'44"W., 49.66 FT.; THENCE N.21°48'28"E., 80.42 FT. TO CORNER 2 M.S.10615 PAUPERS DREAM; THENCE N.81°43'42"W., 70.48 FT.; THENCE N.25°10'44"W., 360.21 FT. TO CORNER 2 M.S.10615 HAMMERWAY; THENCE N.77°14'30"E., 1500.00 FT. TO CORNER 3 M.S.10615 HAMMERWAY; THENCE S.25°10'44"E., 503.58 FT. TO CORNER 4 M.S.10615 HAMMERWAY; THENCE S.77°14'30"W., 1500.00 TO THE POINT OF BEGINNING CONTAINING 16.88 ACRES OF LAND.

LEGAL DESCRIPTION M.S. 10615 GOLD HILL

A TRACT OF LAND LOCATED IN SECTION 8, T.3S., R.4W., MADISON COUNTY, MONTANA, DESCRIBED AS FOLLOWS:
 COMMENCING AT CORNER 1 OF OF M.S. 10615 GOLD HILL, FROM WHICH THE U.S. LAND MONUMENT 5611 BEARS S.12°48'06"W., 2516.39 FT.; THENCE N.25°53'53"W., 374.16 FT. TO CORNER 2 M.S.10615 GOLD HILL; THENCE N.77°14'30"E., 1500.00 FT. TO CORNER 3 M.S.10615 GOLD HILL; THENCE S.25°53'53"E., 374.16 FT. TO CORNER 4 M.S.10615 GOLD HILL; THENCE S.77°14'30"W., 1500.00 TO THE POINT OF BEGINNING CONTAINING 12.55 ACRES OF LAND.

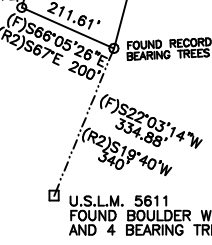
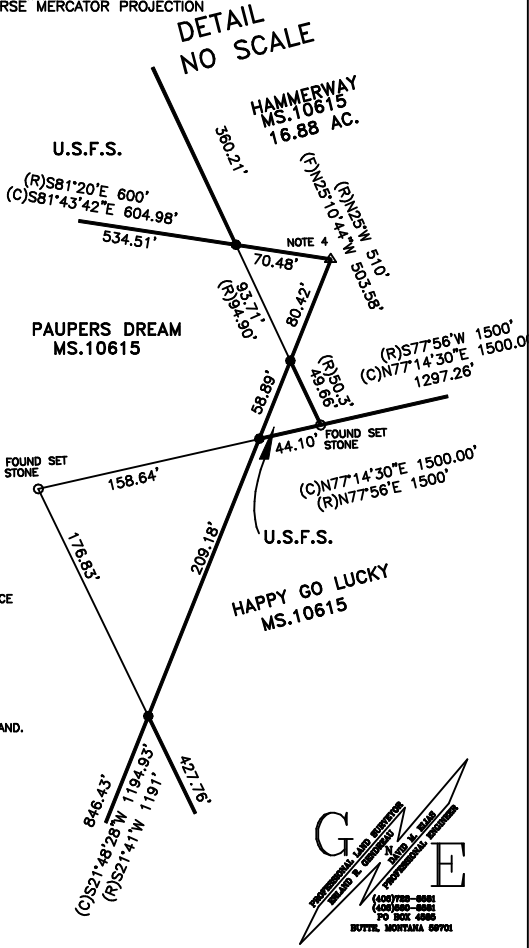
CERTIFICATE OF LAND SURVEYOR

I HEREBY CERTIFY THAT THIS CERTIFICATE OF SURVEY IS A TRUE AND CORRECT REPRESENTATION OF A SURVEY PERFORMED UNDER MY DIRECT SUPERVISION DURING THE MONTH OF OCTOBER 2007.

ERLAND R. GENDREAU
 PROFESSIONAL LAND SURVEYOR
 MONTANA REGISTRATION NUMBER 13235 PLS

CERTIFICATE OF CLERK AND RECORDER

STATE OF MONTANA)
 COUNTY OF MADISON)
 FILED ON THE _____ DAY OF _____, 2007.
 AT _____ O'CLOCK _____ .M.
 COUNTY CLERK & RECORDER
 BOOK _____ PAGE _____ INSTRUMENT NO. _____



	T.3S.	FOR: PAGE AND LEARY
	R.4W.	MINERAL SURVEY RETRACEMENT SECTION 8 T.3S. R.4W. MADISON COUNTY, MONTANA
S8	SHEET 1 OF 1	CERTIFICATE OF SURVEY NO. _____