

Clear Creek Realty



Residential ♦ Land ♦ Ranch ♦ Recreational

Ramshorn 12

Acre Parcel

Sheridan, Montana

Clear Creek Realty

108 S Main, PO Box 708

Sheridan, MT 59749

(406) 842-5028

email: karen@clearcreekmt.com

www.clearcreekmontana.com



Ramshorn Mountain Meadows

South of Sheridan, MT

\$119,900.

Agent Comment: Nestled in a great location
at the base of the Tobacco Root Mountains. -Karen
Talley

Office 406-842-5028

Cell 406-596-0123

karen@clearcreekmt.com

www.clearcreekmontana.com

Virtual Tours Online

☞ 12.0 ± gravity flow, irrigated acres. Main line across the road with riser to property.

☞ Situated just south of Sheridan at the base of the Tobacco Root Mountains with gravity flow irrigation water from the Ruby Reservoir.

☞ Power and phone are to the lot.

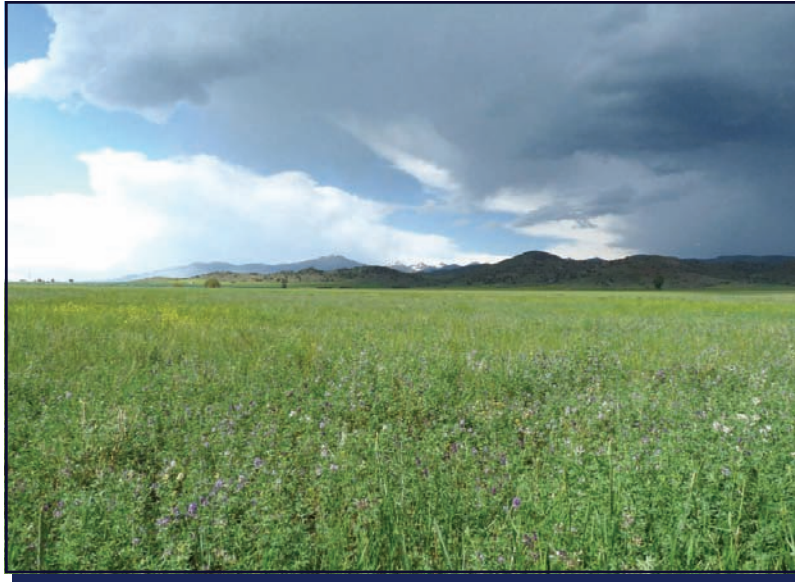
☞ Sensible covenants and water association fees are less than \$300/yr.

☞ These views are tough to beat – Enjoy spectacular views of the Ruby & Tobacco Root Mountains! A desirable Ruby Valley home location!

☞ 2010 Property Taxes (Lot 1) are \$596.15.



\$119,900.



Gorgeous views of the surrounding
Ruby mountains and valley!



Note: All information herein is from sources deemed reliable, but is not guaranteed by Seller, Clear Creek Realty, LLC or its Agents. This offering is subject to errors, omissions, prior sale, change or withdrawal without notice and approval of the purchase by the Owner. We urge independent verification of each and every item submitted to the satisfaction of any prospective purchaser.



Madison County

Madison County is primarily cattle country and agriculture along with rotating crops of hay and grain. Timber harvesting and gold mining are also a part of the valley's economy and history. The scene of some of the earliest and richest gold mining in the history of Montana are based around the nearby towns of Virginia City and Nevada City.

Madison County has gained a reputation as a Fly Fishing mecca in recent years, with the Beaverhead, Big Hole, Ruby and Jefferson Rivers. Fly fishing in this area is unlimited. All of these rivers are widely renowned as excellent and premier trout fisheries.

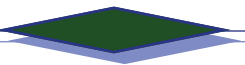
The nearby town of Sheridan offers a hospital, medical clinic, nursing home, fire department, ambulance service, library, summer swimming pool, many stores and shops, restaurants, and five churches of different denominations.

Recreation

Sheridan is located in an area of Montana which boasts many types of big game hunting with access right down the road. The multiple mountain ranges which surround this area provide ample access to trails for hiking or snowmobiling or just picnicking in your own private spot.. Madison County boasts unlimited fly fishing with the Beaverhead, Big Hole, Ruby and Jefferson Rivers which are renowned for their excellent premier trout populations.

Climate

The climate of the valley is relatively mild. Madison County is known for the pleasantly cool summer days with the temperature seldom reaching 90 degrees and no humidity problems. Fall is dramatic with the change in nature's colors as the aspen trees turn to gold and the pasture land to a creamy beige. The nights and mornings are crisp and the days are filled with sunshine.





Residential ♦ Land ♦ Ranch ♦ Recreational

108 S. Main St

PO Box 708

Sheridan, MT 59749

Office (406) 842-5028

info@clearcreekmt.com

www.clearcreekmt.com