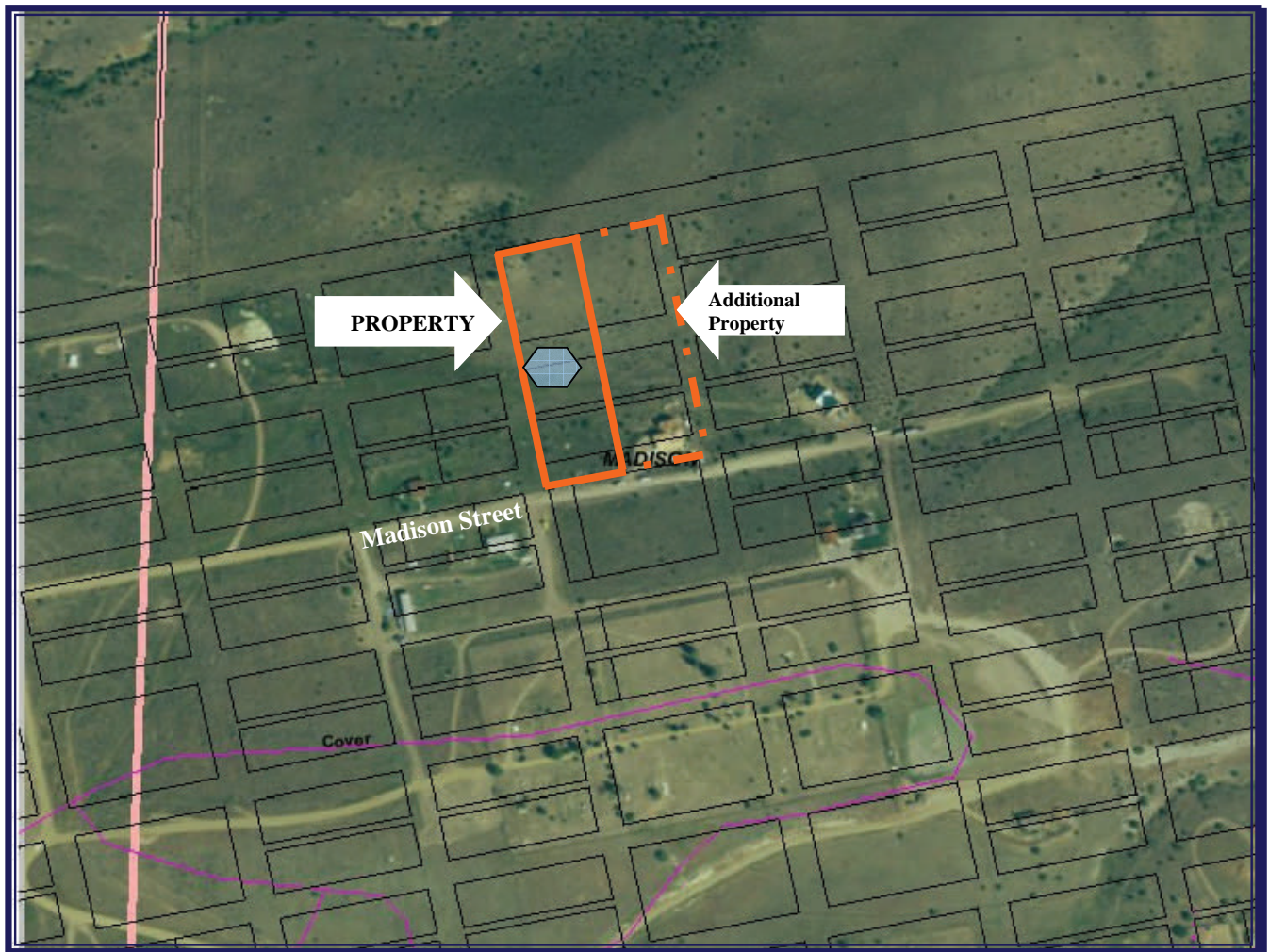

Virginia City Homesite & Pond!

in Southwest Montana



- ≈ 1.55 acres with water service & pond.
- ≈ Additional adjacent home, luxurious and spacious, may be available on approximately 1.8 acres.

Clear Creek Realty

108 S. Main, Sheridan, MT 59749

(406) 842-5028

All maps and boundaries are meant for reference only.

www.clearcreekmontana.com
